

ABS Extinguisher/Hose/Valve Cabinet - Surface Mounted

Ideal for use in outdoor environments. The WB-ABS cabinet has anti UV properties and a neoprene gasket for a water resistant seal. 2x latches with built in hasps for padlock (not incl.) if required. 2x Plexi windows ensures good visibility of equipment and overall door strength.

Construction Specifications:

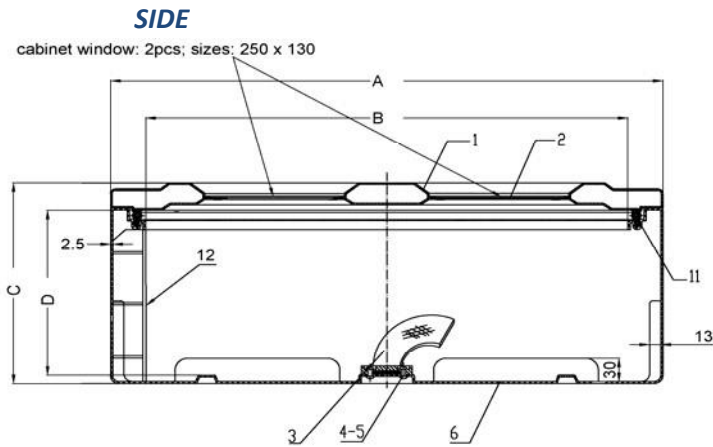
- 2.5MM ABS Construction
- Black Tub / Red Door
- Neoprene Gasket
- 2x Snap Closures
- 2x Clear Acrylic Viewing Panels



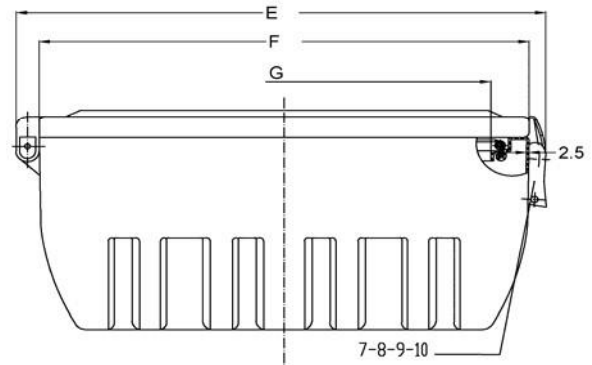
Measurements (mm)

	Capacity	A	B	C	D	E	F	G
WB-ABS1	1x 20lb Dry Chemical Fire Extinguisher	830	750	260	215	320	280	200
WB-ABS2	2x 20lb Dry Chemical Fire Extinguishers <i>or</i> 75ft 1 1/2" Rack Hose w/ 1 1/2" Angle Valve	710	620	270	200	580	530	430

SECTION DETAIL (mm):



TOP/BOTTOM



Parts

- 1 Door
- 2 Acrylic Viewing Panels
- 3-5 Woven Nylon Restraining Strap & Tension Buckle
- 6 Tub
- 7-10 Buckle (x2)
- 11 Neoprene Gasket Seal
- 12 Base Plate

