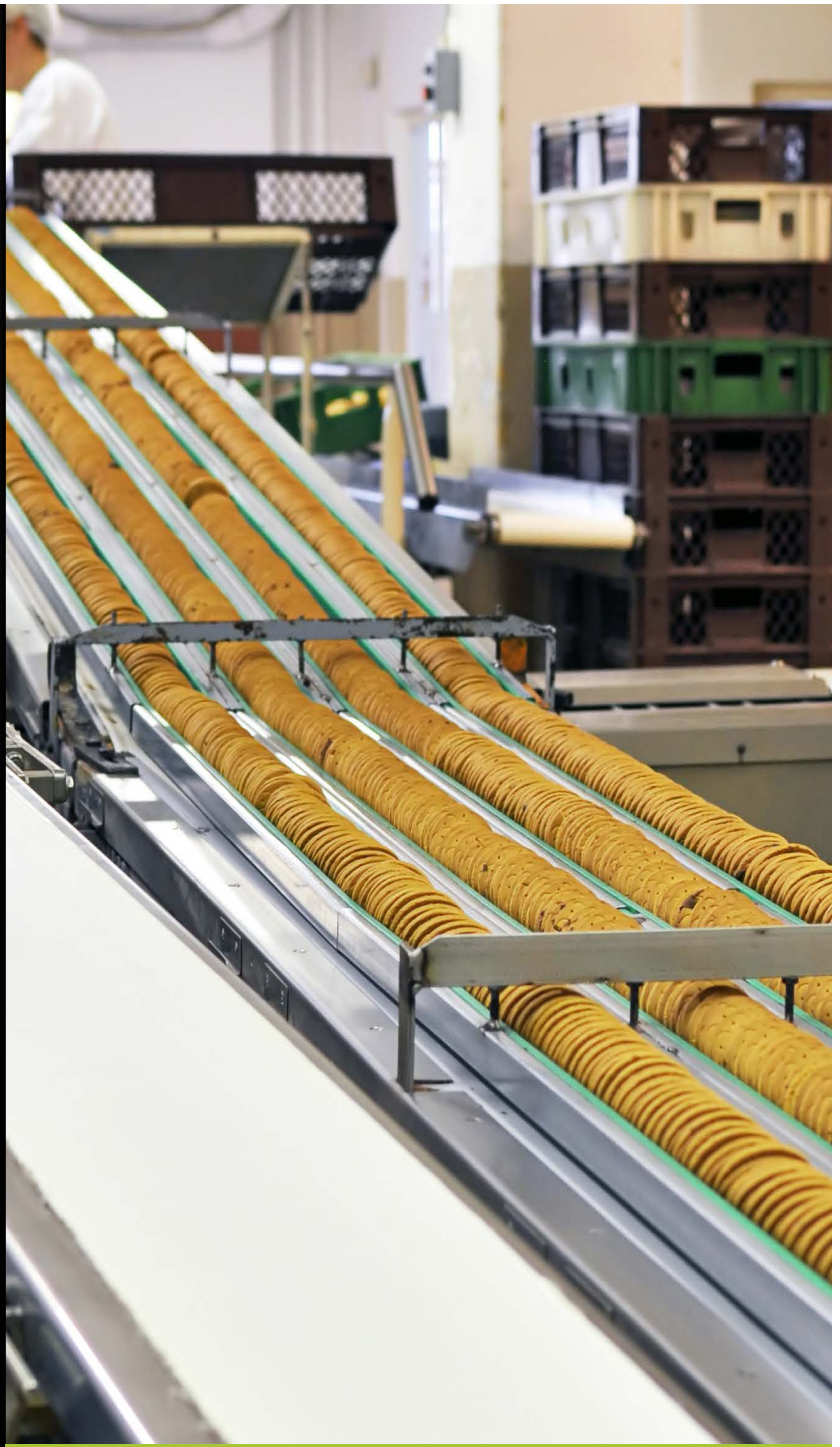




# “DELUGE FAMILY”

Wet Location  
Emergency Units

RPN  
CRPN  
RMN  
EBN



**AimLite**





Our NEMA4X and CSA Sanitation certified to NSF 2 emergency lighting units are specifically designed for wet and cold weather locations, high abuse areas, food processing plants, and applications that require a resistance to corrosive agents.

# DELUGE FAMILY



- The molded gasket completely seals the housing from the elements
- Reinforced polycarbonate construction - will not corrode or rust from water exposure
- CSA Sanitation certified to NSF 2 for food processing plants
- Available with LED or Quartz Halogen lamps
- Cold Weather option at -40°C to +40°C
- Offered in black or white
- Suitable for indoor/outdoor installation





## RPN

### Running Man Sign



- LED ultra bright light source
- High-performance Ni-Cd battery
- Auto test feature comes standard

- Automatic, current limited trickle charger
- Magnetic test switch
- Auto test feature comes standard
- Adjustable lamps

## EBN

### Battery Unit



## CRPN

### Combination Running Man Sign



- 120/277/347VAC Input
- 36W, 50W or 72W wattage capacity
- Temperature compensated charger
- Diagnostic/pilot LED
- Adjustable lamps

- 6VDC, 12DC or 24VDC
- Adjustable lamps

## RMN

### Remote



# RPN

## “DELUGE” WET LOCATION ANTI VANDAL RUNNING MAN

CSA Sanitation certified to NSF 2  
120/277/347VAC Input

**IP RATING**  
**66**

**SP** Approvals:  
Energy Verified  
CSA Certified to C22.2 #141-15 NEMA 4X



### DESCRIPTION

The RPN series of wet location anti vandal running man is designed to operate in extreme environments. The unit, designed using a polycarbonate housing, maintains its sealed interior with a continuous integral gasket. As well, LED pilot light and test switch are sealed type. Available in AC/DC and internally self-powered versions.

### ELECTRICAL – AC/DC

- LED ultra bright light source
- 120/277/347VAC 60Hz Input, field selectable
- 6V, 12V and 24V universal DC

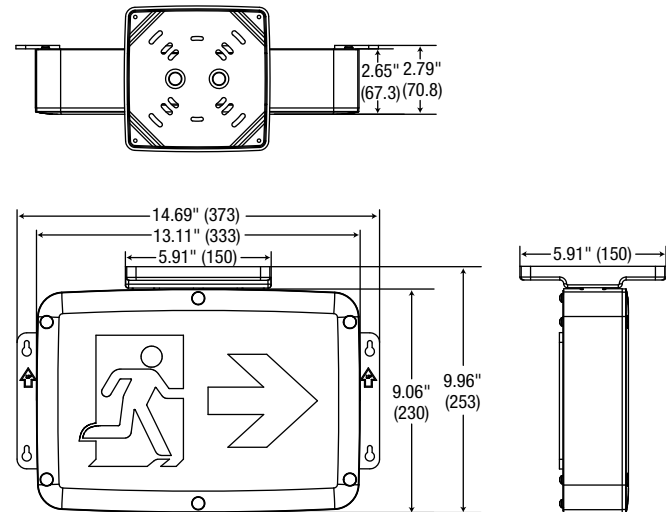
### ELECTRICAL – SELF-POWERED

- LED ultra bright light source
- 120/277/347VAC Input, field selectable
- High-performance, sealed Ni-Cad battery
- 90 minutes emergency duration (standard)  
120 minutes emergency duration is optional
- Solid state transfer and battery charger
- Auto test feature comes standard

### MECHANICAL

- Reinforced polycarbonate construction
- Stainless steel tamper proof screws and bits
- One piece, molded and gasketed lens
- Universal spider knockout pattern stamped into backplate for junction box mounting
- Universal models include ceiling or end mount, field installable canopy kit
- Black or white finish

### DIMENSIONS



Comes standard (single face) with three pictogram legends for direction selection.



Comes standard (double face) with two pictogram legends.



For double face no arrow options, select "0" on the options column.

### ORDERING GUIDE

Series	Nbr of faces	Mounting	Frame colour	DC output	Options
RPN	1 - Single face 2 - Double face	Blank - Universal	BLK - Black WHT - White	UNVDC - Universal DC backup voltage from 6 to 24VDC BAT - Self-powered for 90 minutes BAT1 - Self-powered for 120 minutes	ATD - Auto test standard Blank - Standard +10°C to +40°C CW* - Cold Weather at -20°C to +40°C  0 - No arrows (double face only) ↓ ↑ ↗ ↘ ↙ ↘ D U UR DR DL UL

\* Available only with BAT

# CRPN

## “DELUGE” WET LOCATION RUNNING MAN COMBO

CSA Sanitation certified to NSF 2  
120/277/347VAC Input

**IP RATING**  
**66**

**SP** Approvals:  
Energy Verified  
CSA Certified to C22.2 #141-15 NEMA 4X



### DESCRIPTION

The CRPN series of wet location combination running man exit signs is designed to operate in extreme environments. The CRPN series is designed using a polycarbonate housing. The housing features integral wall mounting points and a molded gasket that completely seals the housing from the elements.

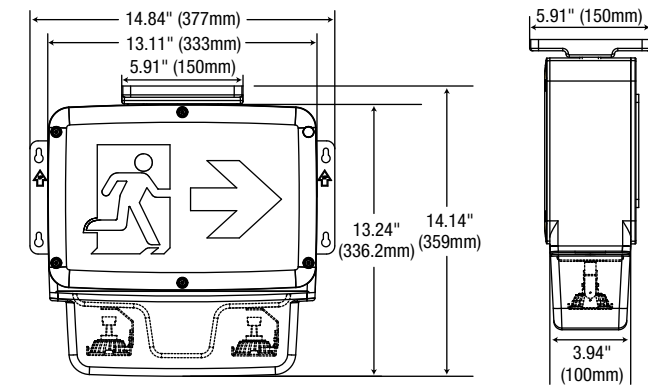
### CIRCUITRY

- LED ultra bright light source
- 120/277/347VAC 60Hz Input, field selectable
- 30 minutes minimum emergency power duration (depending on selected lamp type)
- Temperature compensated charger
- Diagnostic/pilot LED
- Complete battery recharge in 24 hours

### MECHANICAL

- One piece, molded and gasketed lens
- Stainless steel tamper proof screws and bits
- Universal spider knockout pattern stamped into backplate for junction box mounting
- Universal models include ceiling or end mount, field installable canopy kit
- Black or white finish
- Universal mounting

### DIMENSIONS



Comes standard (single face) with three pictogram legends for direction selection.



Comes standard (double face) with two pictogram legends. For double face no arrow options, select "0" on the options column.

### ORDERING GUIDE

Series	Voltage	Wattage	Face	Housing Colour	Heads	Lamps	Mandatory Options	Options
CRPN	06 - 6 Volts	036 - 36 Watts Ni-Cd	1 - Single Face 2 - Double Face	BLK - Black WHT - White	2 - 2 heads	See lamp selection chart	ATD - Auto Test	Blank - Standard +10°C to +25°C CW* - Cold Weather at -40°C to +40°C  0 - No arrows (double face only) ↓ ↑ ↗ ↘ ↙ ↘ D U UR DR DL UL Note: Indicators option available for single & double option only.
		050 - 50 Watts lead acid 072 - 72 Watts lead acid	1 - Single Face					
	12 - 12 Volts	036 - 36 Watts Ni-Cd	1 - Single Face 2 - Double Face					

\* Available only with 6V 36W.

\*Available only with 120/277V

### LAMP SELECTION

	6 Volts	12 Volts
MR16 Small head c/w MR16 or LED lamp		
LED	4WLR, 5WLA	4WLR, 5WLA, 6WLA, 7WLA
Quartz halogen	08WQ, 10WQ, 12WQ	08WQ, 10WQ, 12WQ

### MODEL RATINGS

Model	Voltage	Wattage capacities			
		30 min.	60 min.	90 min.	120 min.
CRPN06036	6V	36	18	12	9
CRPN06050	6V	50	25	16.5	12.5
CRPN06072	6V	72	36	24	18
CRPN12036	12V	36	18	12	9

# RMN

## “DELUGE” WET LOCATION ANTI VANDAL REMOTE

CSA Sanitation certified to NSF 2

Single or Double

6V, 12V & 24V Lamps in LED & Quartz



IP RATING  
**66**

Approvals:  
CSA Certified to C22.2 #141-15 NEMA 4X

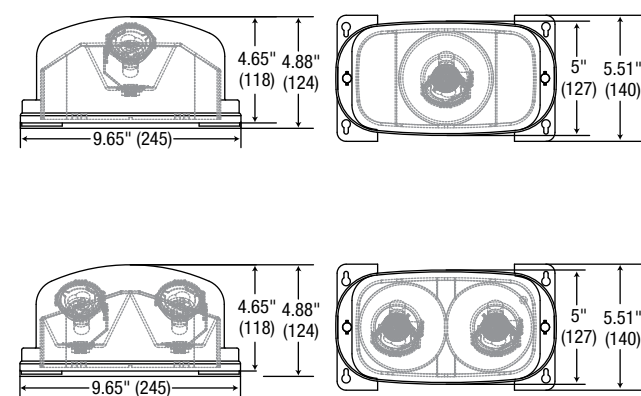
### DESCRIPTION

The RMN series of wet location anti vandal remotes is designed to perform in extreme environments. The single or double lamp assemblies are completely protected from the elements within a fully gasketed polycarbonate housing. Available in 6V, 12V and 24V models, utilizing quartz halogen or LED (bi-pin based) lamps.

### MECHANICAL

- Polycarbonate enclosure is fully gasketed around lens and canopy to prevent water infiltration
- Stainless steel tamper proof screws and bits
- Wet location
- Lamps are fully adjustable
- Fully gasketed housing
- Available in white and black
- 6VDC, 12VDC or 24VDC
- Quartz halogen lamps - bi-pin based
- LED lamps - bi-pin based
- Universal spider knockout pattern stamped into backplate for junction box mounting

### DIMENSIONS



### ORDERING GUIDE - LED

Series	Nbr of heads	Voltage	Wattage	Lamp type	Colour
RMN	1 - Single head 2 - Double head	06-24V - 6VDC to 24VDC operational	4W - 4 watts	LR - LED	BLK - Black WHT - White
			5W - 5 watts	LA - LED	
	12-24V - 12VDC to 24VDC operational	6W - 6 watts 7W - 7 watts	LA - LED		

### ORDERING GUIDE - INCANDESCENT

Series	Nbr of heads	Voltage	Lamp	Colour
RMN	1 - Single head 2 - Double head	06V - 6VDC 12V - 12VDC 24V - 24VDC	See lamp selection chart	BLK - Black WHT - White

### INCANDESCENT LAMP SELECTION

	6 Volts	12 Volts	24 Volts
Quartz halogen	08WQ, 10WQ, 12WQ	08WQ, 10WQ, 12WQ	10WQ, 12WQ

# EBN

## “DELUGE” WET LOCATION BATTERY UNIT

6 or 12V Models, 36W, 50W, 72W, 100W or 130W

CSA Sanitation certified to NSF 2

120/277/347VAC Input



IP RATING  
**66**

Approvals:  
CSA Certified to C22.2 #141-15 NEMA 4X

### DESCRIPTION

The EBN series of battery units is designed to operate in the most extreme environments. The unit, designed using a polycarbonate housing, maintains its sealed interior with a continuous integral gasket. The EBN series is available in 6VDC and 12VDC versions in 36W, 50W, 72W, 100W or 130W wattage capacity for a minimum of 30 minutes in emergency mode. Auto test is standard.

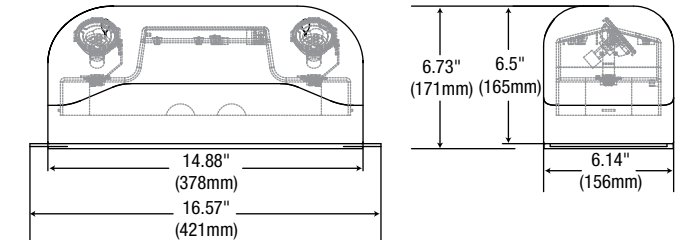
### CIRCUITRY

- 120/277/347VAC 60Hz Input, field selectable
- High efficiency, rapid recovery, precision control charging system
- Magnetic test switch
- Diagnostic/pilot LED
- Fully automatic, current limited charger
- Temperature compensated charger
- Complete battery recharge in 24 hours
- Standard automatic-testing, self-diagnostic charger board
- Universal spider knockout pattern stamped into backplate for junction box mounting

### MECHANICAL

- Fully gasketed, reinforced polycarbonate housing – will not corrode or rust from water exposure
- Stainless steel tamper proof screws and bits
- Black or white finish

### DIMENSIONS



### ORDERING GUIDE

Series	Voltage	Wattage	Lamps	Housing colour	Mandatory Options	Options
EBN	06 - 6 Volts 12 - 12 Volts	036 - 36 Watts, Ni-Cd 050 - 50 Watts, lead acid 072 - 72 Watts, lead acid 100 - 100 Watts, lead acid 130 - 130 Watts, lead acid	See lamp selection chart	BLK - Black WHT - White	ATD - Auto Test	Blank - Standard +10°C to +25°C CW* - Cold weather at -40 to +40°C

\* Available only with 6V 36W. \*\* Available only with 120/277V.

### LAMP SELECTION

	6 Volts	12 Volts
MR16 Small head c/w MR16 or LED lamp		
LED	4WLR, 5WLA	4WLR, 5WLA, 6WLA, 7WLA
Quartz halogen	08WQ, 10WQ, 12WQ	08WQ, 10WQ, 12WQ

### MODEL RATINGS

Model	Voltage	Wattage capacities			
		30 min.	60 min.	90 min.	120 min.
EBN06036	6V	36	18	12	9
EBN06050	6V	50	25	16.5	12.5
EBN06072	6V	72	36	24	18
EBN06100	6V	100	50	33	25
EBN06130	6V	130	65	43	33
EBN12036	12V	36	18	12	9
EBN12050	12V	50	25	16.5	12.5
EBN12072	12V	72	36	24	18
EBN12100	12V	100	50	33	25
EBN12130	12V	130	65	43	33





# AimLite

**AIMLITE Inc.** • 2233 Rue de l'Aviation, Dorval, QC H9P 2X6  
T. 1-866-348-2374, F. 1-866-670-3975 • [www.aimlite.com](http://www.aimlite.com)



aim\_deluge\_en\_R04