



GETZ EQUIPMENT INNOVATORS
PART NO.: 3G58634
MODEL: BV 101 P
PNEUMATIC BELT VISE

BELT VISE

PART NO.: 3G58634

TABLE OF CONTENTS

PAGE #

1	SPECIFICATIONS AND REQUIREMENTS
2	SET-UP AND OPERATION PROCEDURE
3	PARTS LIST
4	SCHEMATIC
5	SCHEMATIC
6	SCHEMATIC
7	TROUBLE SHOOTING

SPECIFICATIONS AND REQUIREMENTS

SPECIFICATIONS:

HEIGHT - 38 INCHES (96.5 cm)

WIDTH – 16.75 INCHES (42.5 cm)

LENGTH – 27.25 INCHES (69 cm)

WEIGHT - 130 LBS (59 Kg)

SHIPPING WEIGHT - 154 LBS (70 Kg)

SHIPPING CONTAINER SIZE:

HEIGHT – 41.75 INCHES (106 cm)

WIDTH – 18.5 INCHES (47 cm)

LENGTH – 31.5 INCHES (80 cm)

REQUIREMENTS:

AIR SOURCE

1. CO2 VAPOR
2. NITROGEN
3. COMPRESSED AIR

MAXIMUM CYLINDER HOLDING DIAMETER:

Ø12 INCHES (30 cm)

OPTIONAL EQUIPMENT:

3G59407-KIT ROLLER VISE: ALLOWS VISE TO ACCOMMODATE CYLINDERS UP TO 16 INCHES.

1G51957-SLIP JOINT DEVALVING WRENCH

"CAUTION"

1. THIS BELT VISE MUST HAVE A REGULATED AIR SOURCE OF NO MORE THAN 140 P.S.I.
2. OPERATOR MUST KEEP HANDS CLEAR OF THE BELT WHEN OPERATING THIS VISE.
3. OPERATOR MUST WEAR SAFETY GLASSES WHEN OPERATING THIS VISE.

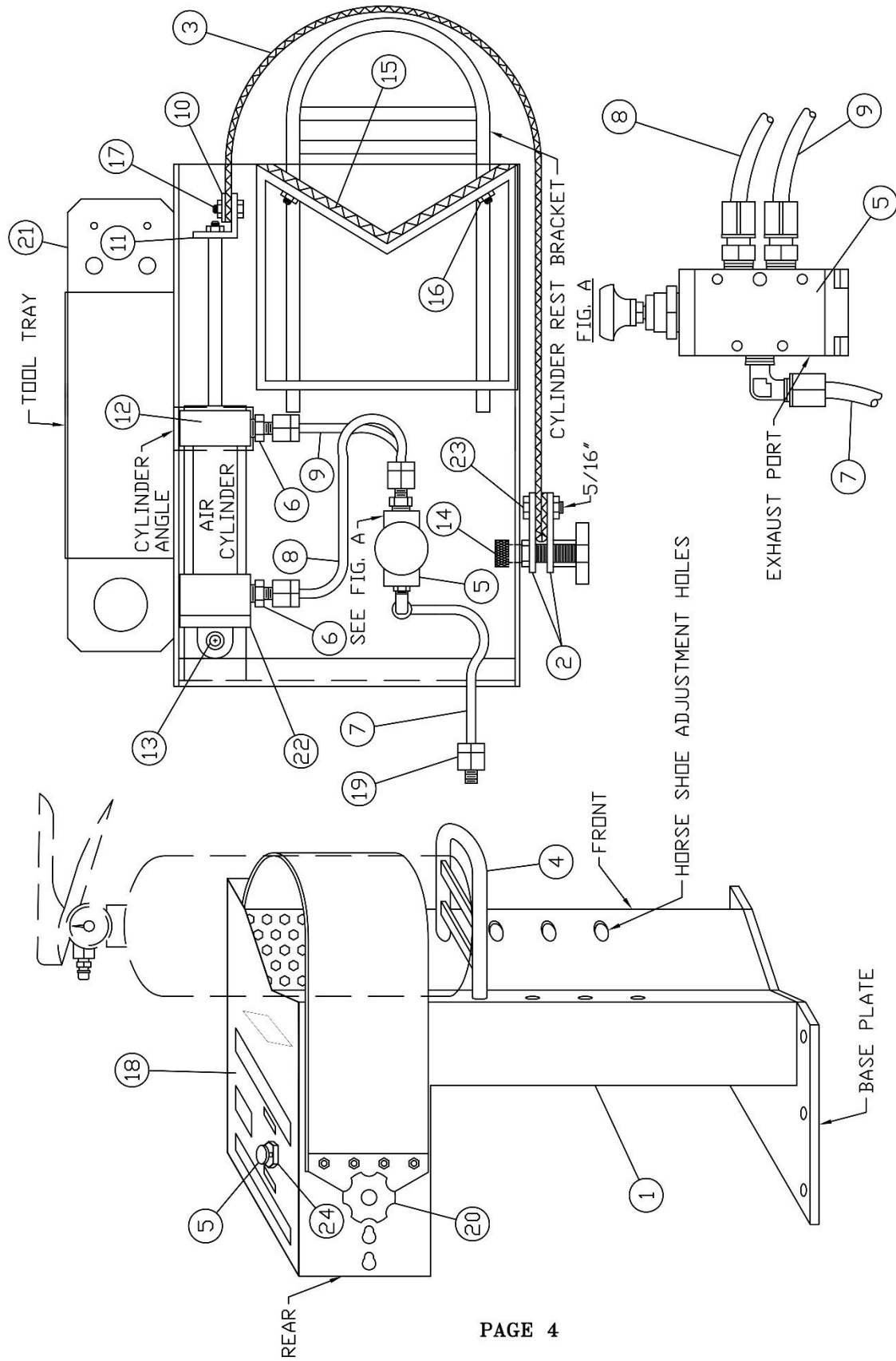
SET-UP AND OPERATIONS

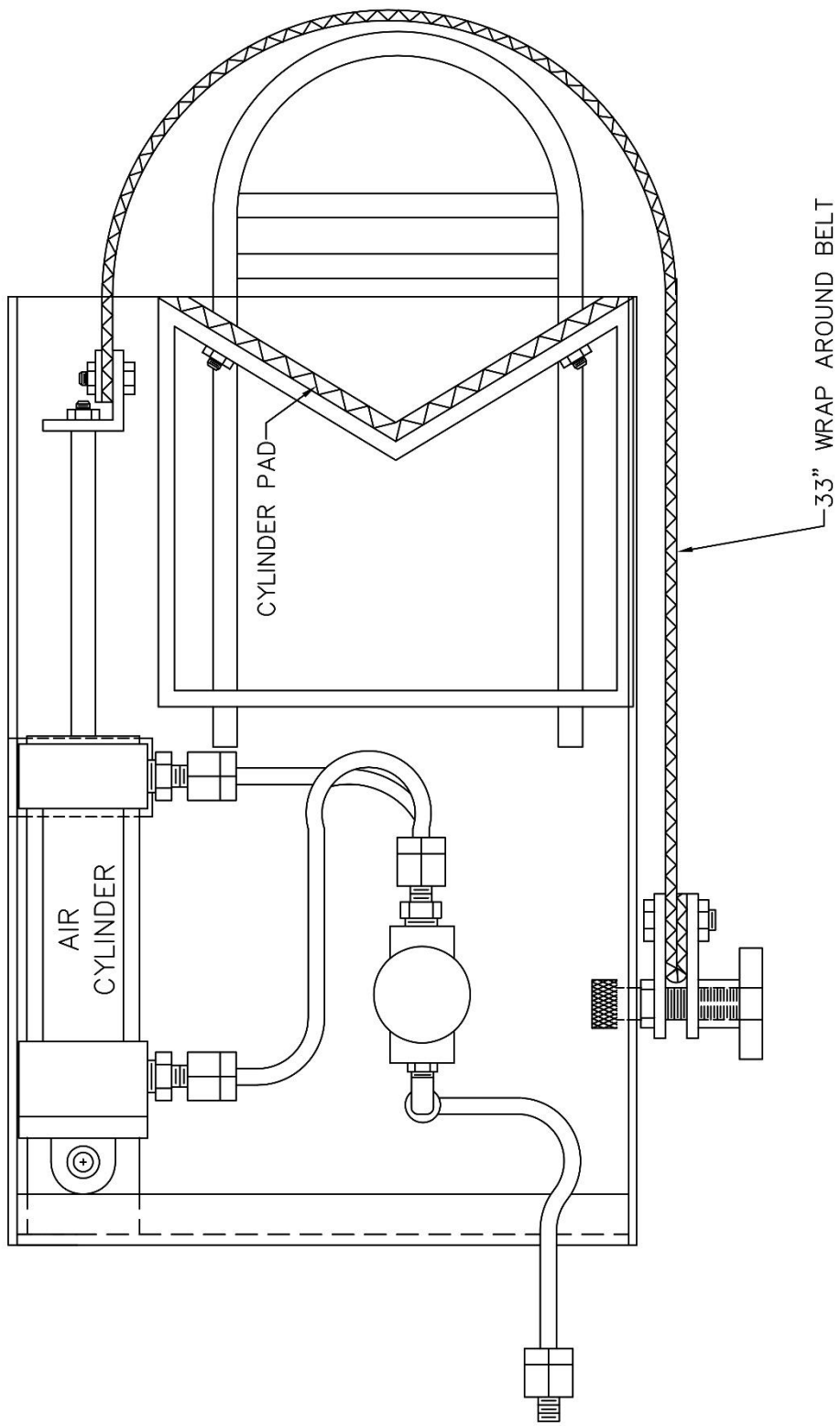
REFER TO SCHEMATIC

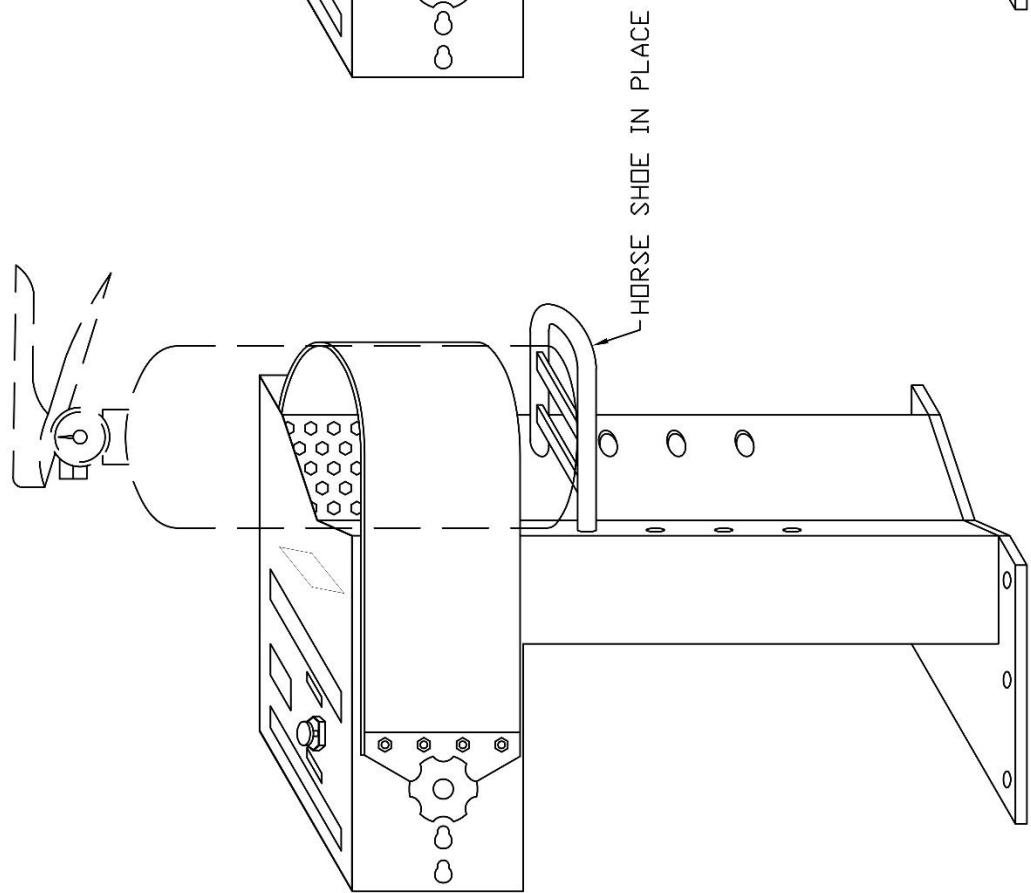
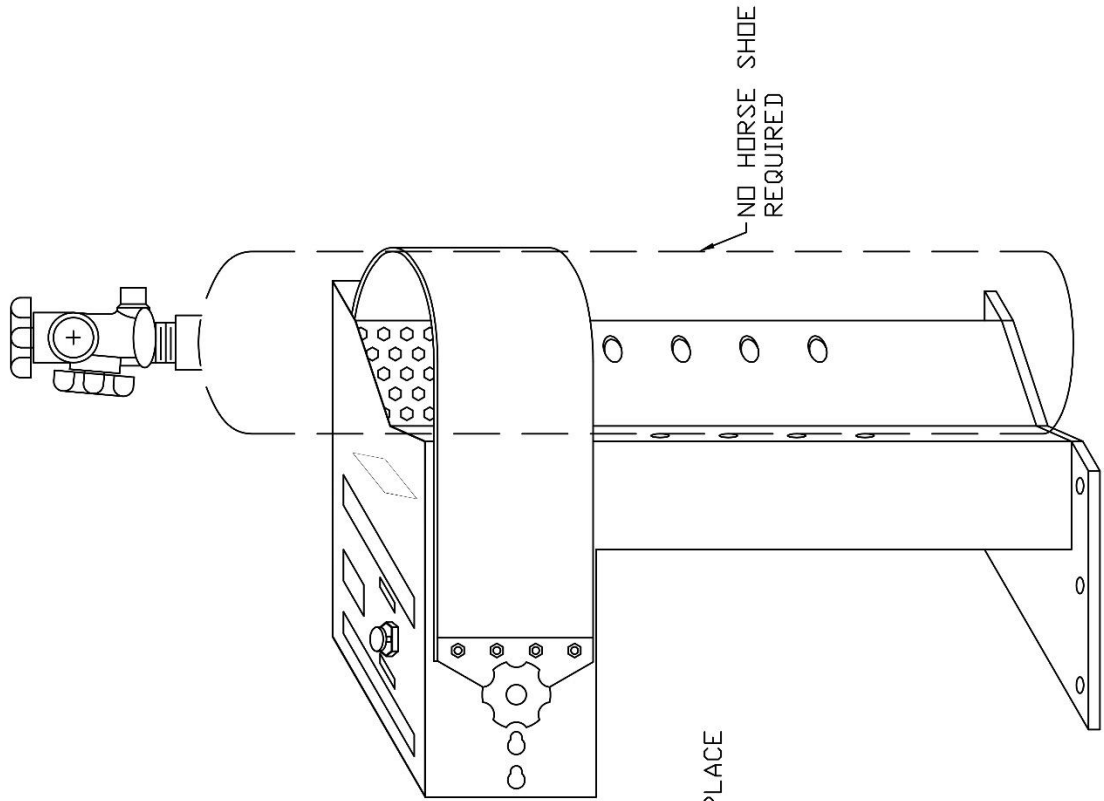
- Step 1 - Locate the belt vise in an area where the operator will have access to adjust the belt handle (item #20) and room to devalue the cylinder.
- Step 2 - After placement of the belt vise, bolt base plate to the floor with lag screw or bolts to secure the vise from moving when devalving cylinders.
- Step 3 - Remove the plastic connector (item #19) from the yellow air line (item #7) and thread tape or place sealant on the male pipe threads.
- Step 4 - Screw the plastic connector (item #19) into the outlet port on your regulator and reconnect the yellow line (item #7) to the plastic connector (item #19).
- Step 5 - Push the air control valve handle (item #5) down and set your regulator min. – 100 PSI to. – 140 PSI.
- Step 6 - Remove the belt handle (item #20) from the slots in the belt vise and adjust the horse shoe (item #4) in the proper holes for the size of cylinder being devalved.
- Step 7 - Place the cylinder to be devalved on top of the horse shoe (item #4) or for larger cylinders, remove the horse shoe (item #4) and place the cylinder in the front V of the belt vise.
- Step 8 - Reinsert the belt handle (item #20) back into the farthest slot on the vise that can be reached.
- Step 9 - Remove hands from belt on vise and pull up on air control valve handle (item #5).
- Step 10 - After making sure no pressure is in the cylinder being devalved, place your devalving wrench on the cylinder valve and screw the valve out of the cylinder.
- Step 11 - Push down on air control valve handle (item #5) while holding onto the cylinder, and remove the belt handle (item #20) from the slot in belt vise and remove the cylinder.
- Step 12 - Follow step #6 through Step #11 on other cylinders.

PARTS LIST

<u>NO.</u>	<u>PART #</u>	<u>DESCRIPTION</u>	<u>QTY</u>
1	1G51835	STAND PEDESTAL ONLY	1
2	1G51725	PLATE RESTRAINING BELT	2
3	1G58512	BELT 33 WRAP AROUND ONLY	1
4	1G51411	HORSE SHOE	1
5	3G59484	VLV PUSH/PULL PARKER W/KNOB	1
6	1G51230	CONNECTOR PLAS 3/8 MPT X 1/4 TUBE	2
7	1G0047	MTL NYCOIL 1/4 YL	10 FT
8	1G0047	MTL NYCOIL 1/4 YL	1 FT
9	1G0047	MTL NYCOIL 1/4 YL	1 FT
10	1G51717	PLATE BACKING BELT	1
11	1G51548	ANGLE HOLDING BELT	1
12	1G0397	CYL SMC FOR BELT VISE	1
13,22,23	1G54432	MOUNT CLEVIS CYL SMC	1
14	1G51791	SCREW SOCKET 1/2 X 2	1
15	3G58582	PAD CYL	1
16	1G51142	BOLT ELEVATOR 1/4 X 1	6
17	GRADE 5	BOLT HEX HEAD 1/4 X 1	4
18	1G51286	DECAL PANEL VISE	1
19	1G0136	CONNECTOR PLAS 1/4 ML X 1/4 TUBE	1
20	1G51378	HANDLE BELT	1
21	1G51878	TRAY TOOL	1
24	1G51583	NUT MOUNTING VALVE	1







TROUBLESHOOTING

PROBLEM

- 1) Vise isn't holding cylinder
- 2) Air leak in control valve
- 3) Air leak in air cylinder body
- 4) Air blows out exhaust post on air valve continuously
- 5) Belt broken, worn, or torn
- 6) Bent air cylinder shaft

SOLUTION

- 1) a. Adjust pressure to 100-140 PSI
b. Check for air leaks & repairs
- 2) Replace valve – P/N: 3G59484
- 3) Repair air cylinder cylinder P/N: 1G0397
- 4) Repair air cylinder cylinder P/N: 1G0397
- 5) Replace belt – P/N: 3G58512
Replace belt assembly – P/N:3G58514
- 6) Replace air cylinder – P/N: 53235 &
install belt roller kit – P/N: 3G59407

Use the following kit for general service and maintenance – P/N: 3G58895