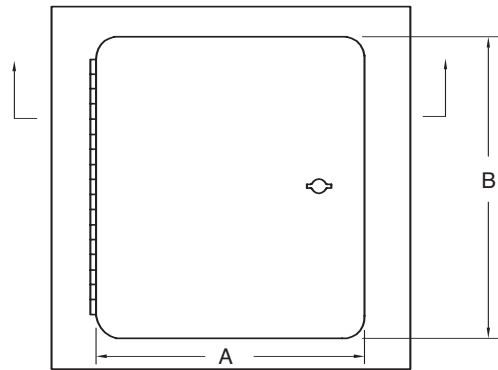


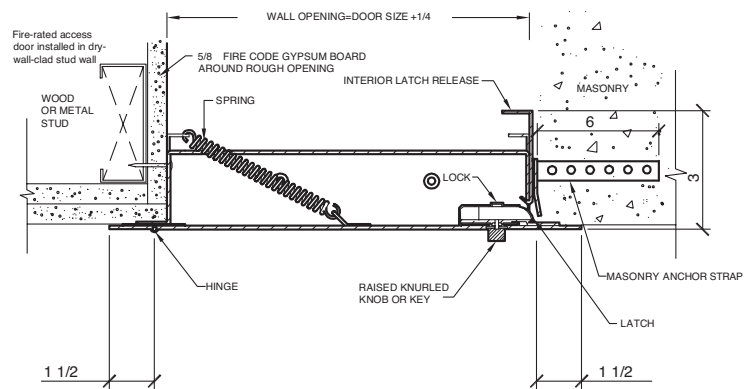
## DETAIL & SUBMITTAL SHEET



FRONT ELEVATION



SECTION DETAIL



**SPECIFICATIONS:**

- Door:** 14 ga. steel.
- Frame:** 16 ga. steel, 2 1/2" deep
- Hinge:** Continuous piano hinge. Allows opening to 180°.
- Latches:** Self-latching direct action latch accepts both key and knurled knob
- Automatic Panel Closer:** Furnished on all doors. Vertical position only
- Inside Panel Release:** Furnished on all doors
- Finish:** grey baked enamel coat

**OPTIONS:**

- Mortise Best Lock
- Hot Smoke Seal gasketing all 4 sides\*\*
- Special sizes available

| ✓ | Item No. | Door Size W x H | Wall Opening    | Slam Catch | Ship Wt. Lbs. |
|---|----------|-----------------|-----------------|------------|---------------|
|   | FRB 900  | 8 x 8           | 8 3/8 x 8 3/8   | 1          | 8             |
|   | FRB 900  | 10 x 10         | 10 3/8 x 10 3/8 | 1          | 10            |
|   | FRB 900  | 12 x 12         | 12 3/8 x 12 3/8 | 1          | 12            |
|   | FRB 900  | 14 x 14         | 14 3/8 x 14 3/8 | 1          | 14            |
|   | FRB 900  | 16 x 16         | 16 3/8 x 16 3/8 | 1          | 17            |
|   | FRB 900  | 18 x 18         | 18 3/8 x 18 3/8 | 1          | 21            |
|   | FRB 900  | 20 x 20         | 20 3/8 x 20 3/8 | 1          | 24            |
|   | FRB 900  | 22 x 22         | 22 3/8 x 22 3/8 | 1          | 28            |
|   | FRB 900  | 24 x 24         | 24 3/8 x 24 3/8 | 1          | 32            |
|   | FRB 900  | 24 x 30         | 24 3/8 x 30 3/8 | 2          | 43            |
|   | FRB 900  | 24 x 36         | 24 3/8 x 36 3/8 | 2          | 48            |
|   | FRB 900  | 30 x 30         | 30 3/8 x 30 3/8 | 2          | 50            |

The FR Basic Uninsulated access door can only be used in an area where no temperature rise is required.

\*\* Hot Smoke Seal™ fire tested: Listed to meet the requirements of standards UL10B, UL10C, UBC 7-2, Part 1 and BS476: 1987 for application to fire rated door assemblies.



UL, Northbrook, IL - 1-1/2 hour "B" label, no temperature rise for vertical wall installations only. Test file number - R-10364

Project: \_\_\_\_\_ Date: \_\_\_\_\_

Contractor: \_\_\_\_\_ Architect: \_\_\_\_\_

Sizes: \_\_\_\_\_ Quantity: \_\_\_\_\_ Approval Initials: \_\_\_\_\_



Corporate Office: 1330 Progress Drive • Front Royal, VA 22630  
Phone: 1-800-255-5515 • Fax: 1-800-822-5001

[www.wbdoors.com](http://www.wbdoors.com)